

Colbondrain[®]

Geocomposite for vertical drainage

PRODUCT DATA

Properties

Type	CX1000
Polymer	PE/PP

Hydraulic properties geocomposite ^[1]

Flow capacity q_w (350 kPa, $i = 0.1$)	EN ISO 12958	ml/s	140
---	--------------	------	-----

Mechanical properties geocomposite

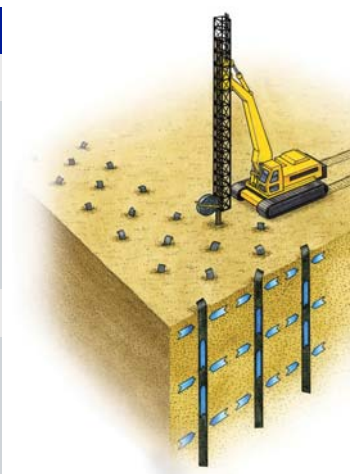
Tensile strength MD	EN ISO 10319	kN/m	2.5
Elongation at 1.0 kN	EN ISO 10319	%	3.0

Hydraulic properties fleece

Water permeability, $V_{I_{H50}}$	EN ISO 11058	mm/s	70
Opening size	EN ISO 12956	μm	75

Dimensions

Roll			
Thickness	mm		4
Weight	g/lm		80
Width	m		0.1
Length	m		280
Pack (10 rolls)			
Diameter	m		1.16
Length	m		1.0
Gross weight	kg		245



^[1] Flow capacity is tested under foam/foam circumstances.



The information set forth in this data sheet reflects the best knowledge at the time of publication. The document is subject to change pursuant to new developments and findings. The same reservation applies to the properties of the products described. No liability is undertaken for results obtained by usage of the products and information.

Colbond bv
P.O. Box 9600
6800 TC Arnhem
The Netherlands

T: +31 26 366 4600
F: +31 26 366 5812
geosynthetics@colbond.com
www.colbond-geosynthetics.com
www.colbond.com