

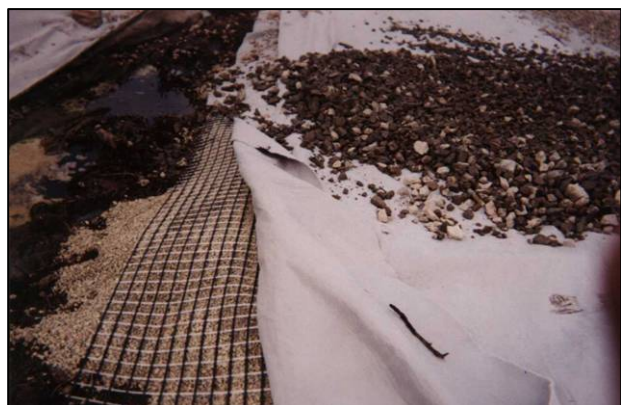
## Port of Brisbane Motorway Realignment

Location:	Hemmant, Queensland, Australia
Authority:	Main Roads, Qld
Consultant:	Main Roads
Contractor:	Beilby Holdings
Date:	November, 2001
Product type:	Enkagrid MAX 40 & Colbondrain CX 1000
Quantity:	9,000 m <sup>2</sup> & 180,000 lm



The realignment of Port of Brisbane Motorway to serve the ever increasing port traffic in Brisbane required construction of the road embankment over a low lying swampy area. The ground was a soft mud and in places overlaid a previous uncontrolled fill site.

A series of prefabricated Colbondrain vertical wick drains were installed to accelerate consolidation of this fill to allow construction of the new motorway.



The Main Roads department provided a design specification for a geosynthetic reinforcement layer to provide a tensile strength of 25kN/m after one year at a maximum strain of 5 percent. Enkagrid MAX40 was proposed as a suitable pavement reinforcement layer and was approved for use by Main Roads.

Enkagrid proved very successful and was described by the contractor as being much easier to install than other plastic geogrids that he had used previously.



Enkagrid is manufactured with quality controlled laser welding of extruded polypropylene bars into a stiff and stable geogrid that does possess the same 'memory' or inclination to roll back up as other plastic geogrids.

The data set forth in this photo leaflet reflects our best knowledge at the time of issue. It is subject to change pursuant to new developments and findings, and a similar reservation applies to the properties of the products described. We do not undertake any liability for results obtained by usage of this information or the products mentioned.



**Colbond bv**  
P.O. Box 9600  
6800 TC Arnhem  
The Netherlands  
Tel. : +31 26 366 46 00  
Fax : +31 26 366 58 12  
E-mail : [geosynthetics@colbond.com](mailto:geosynthetics@colbond.com)